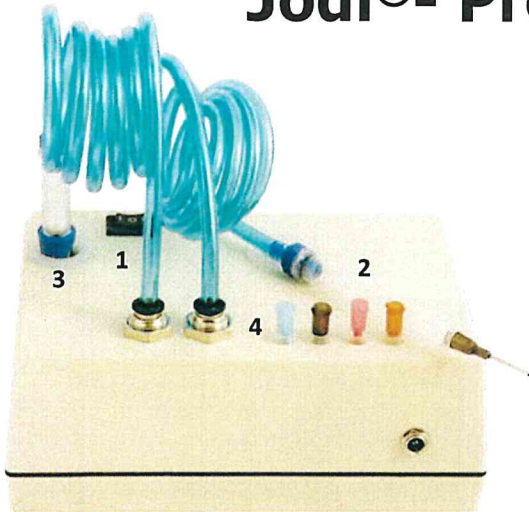


Jodi®- Pressure / Vac



1. Vacuum/Press On/Off/On Switch
2. Air Pressure Assembly — **non removable**
3. Vacuum Filter with Ball — **please don't clean, they can be filled up and then replaced inexpensively**
4. Inserts for Needle Storage

VACUUM

1. Turn on switch (#1) to Vacuum, use needle vacuum (#3)
The White ball in the filter is an *air flow indicator*. When air is flowing through the needle past the filter, it pushes the ball towards the tubing on its way to the vacuum pump. If the air stops flowing, the ball drops away from the tubing.
Please clean the needle first as the filter takes a long time to fill up with debris. Clean the needle while the vacuum is running, insert reamer into needle to push lodged wax into filter.

PRESSURE

1. Turn on switch (#1), and use air pressure assembly (#2) The air pressure assembly is secured to the blue tubing. Please don't try to remove-- call first. It only blows clean air so no filtration is required.
DO NOT BLOW INTO MICROPHONE OR RECEIVER PORTS!

HELPFUL HINTS

1. Our Pink needle is specifically designed for maximum vacuum efficiency in CIC's, ITC, ITE, and RIC sound bores.

The Light Blue needle is sized for open ear Thin Tubes.

Our Black needle is oversized for Ear Molds.

Use of force will bend these needles and ruin Hearing Instruments.

Changing this needle to another size will decrease vacuuming efficiency in the sound bore and the receiver nubbin.

1-Spare Filter

- 1- Blue Needle and Reamer
- 1- Reamer for Pink and Black
- 1- Pink Needle
- 1- Black Needle

3- Wire Reinforced Air Pressure Reamers to be used for vent cleaning, general blowing, **but not for vacuuming as they will clog. The pink reamer is far less rigid, so take care when using.**

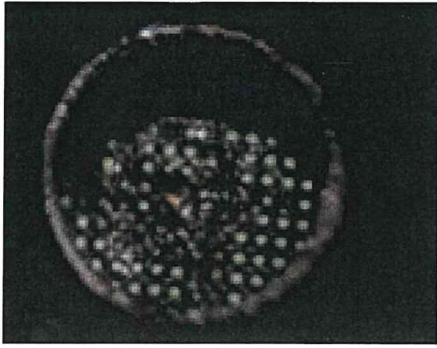


CLEANING

DO NOT IMMERSE IN LIQUIDS OR APPLY LIQUIDS BY POURING ONTO UNIT.

First—Test your preferred cleaning product on a small area.

Alcohol or household non-sudsing ammonia is very effective.



Receiver Screen with some debris.
A light is behind the holes to better show the openings.

Note: a Video Otoscope will not Amplify adequately to distinguish a clear hole verses an oil filled hole

Oil will block sound waves.

Hearing Aid Tech. Notes

Dear Professional,

Hearing Instrument design forces us to use a small needle, therefore it is important to understand that my needle is highly efficient and use of other "milled needles" will dramatically reduce its ability to pull debris through.

When removing Cerumen, remember it comes in many textures:

Hard and Dry, in all sizes and shapes– Best picked and vacuumed. Large pieces will sit on end of needle, remove from tip of needle.

Soft and Sticky – Slowly vacuum till clean

Oily- Vacuum till clean, then you may need to add a grease cutting agent to penetrate the small holes of the damped receiver screen as shown. Then vacuum the screen and repeat two more times to get all the holes cleared of oil.

Clear Non Sudsing Ammonia is excellent Cerumen emulsifier.

A single drop of ammonia dispensed from a size 20 needle is enough to liquefy this very small area.

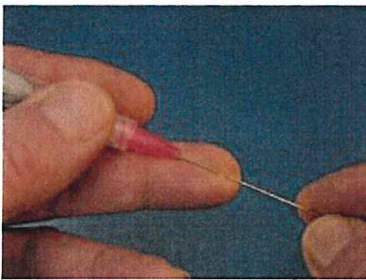
Heads up — the more ammonia you introduce into the filter, the shorter the life of the filter. There is an optional liquid filter available.

Observation under a microscope:

Alcohol did not alter Cerumen, got it wet.

Hydrogen Peroxide also did not alter Cerumen, but rather made bubbles which moved particulates around. Emulsion did not take place.

Clear Non-Sudsing Ammonia turns Cerumen into a "bean soup" which dramatically improves the cleaning process.



USING REAMER

Create an indent on your finger with needle,
place reamer in the indent and slide into needle.

NOTES

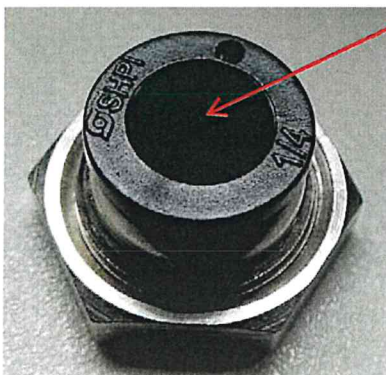
A plugged needle will cause flow indicator ball NOT to rise.

A plugged needle will act as a ramrod and push wax deeper.

Pushing needle in too fast without paying attention will produce undesired results.

Pushing too hard on Microphone will dislodge Mic. from faceplate.

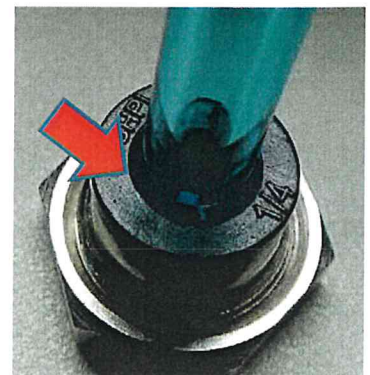
Old Receiver tubes are prone to coming loose, be gentle.



Insert tubing past the locking teeth and continue pushing till tubing bottoms out.

To release push down black ring and hold
while pulling tubing out

This quick release allows for easy tube replacement or to switch to the optional liquid filter.



READ ALL INSTRUCTIONS BEFORE USING IMPORTANT SAFEGUARDS

*THIS PRODUCT IS INTENDED FOR THE CLEANING OF HEARING AID DEVICES
AND NOT TO BE USED TO CLEAN EARS.*

DANGER – to reduce the risk of electric shock:

1. Always unplug this product immediately after using.
2. Do not use while bathing.
3. Do not place or store product where it can fall or be pulled into a tub or sink.
4. Do not place in or drop into water or other liquid.

WARNING – To reduce the risk of burns, electrocution, fire or injury to persons:

1. **Do not get the syringe end near eyes or ears, as the needle can puncture skin.**
2. **Do not clean ears with this product.**
3. **If your product comes with a Desiccant, and you are drying it out by use of a heating source— understand that the desiccant will get very hot and will burn your skin.**
4. **This product is intended to clean hearing aids, any unauthorized use will void any and all warranties.**
5. A product should never be left unattended when plugged in.
6. Close supervision is necessary when this product is used by, on, or near children or invalids.
7. Use this product only for its intended use as described in this manual. Do not use attachments not recommended by the manufacturer.
8. Never operate this product if it has a damaged cord or plug, if it is not working properly, if it has been damaged, dropped into water. Return the product to the manufacturer for examination and repair.
9. Keep the cord away from heated surfaces.
10. Never use while sleepy or drowsy.
11. Do not use where aerosol (spray) products are being used or where oxygen is being administered.

CAUTION — RISK OF ELECTRIC SHOCK, DO NOT REMOVE COVER. REFER SERVICING TO QUALIFIED PERSONNEL

This product is for use on a nominal 12VDC circuit. Use the appropriate AC to DC adapter as supplied with this product when plugging in to household current. This product is factory equipped with a specific electric cord and plug to permit connection to a proper electric circuit. Make sure that the product is connected to an outlet having the same configuration as the plug. Do not modify the plug provided – if it will not fit the outlet, have the proper outlet installed by a qualified electrician. If the product must be reconnected for use on a different type of electrical circuit, the reconnection should be made by qualified service personnel.

WARRANTY

If wax or debris is found inside unit, it will be assumed that vacuuming occurred without the protection of the supplied filter assemblies. Please do not clean filter assemblies. Replacement filters are available. A \$30.00 cleaning charge may be applied.

Manufacturer will repair or replace the product for all defects and workmanship for a period of 3 Years from the date of purchase.

Syringe assembly and needle are excluded from this or any other warranty.

Manufacturer is not responsible for incidental or consequential damages arising from accident, abuse, misuse, or failure to follow instructions for the product. Any alteration of the product voids this warranty.

To activate this warranty, purchaser must show proof of purchase date of the product. If purchased through JodiVac, your warranty will be automatically activated.

Purchaser is responsible for shipping and handling costs when returning the product for warranty service.

JODI-VAC IS NOW A PART OF
GREEN'S OTO SUPPLIES!
jodivac.com
greensoto.com

Contact McKenzie at
customerservice@greensoto.com
541-735-3244

Green's Oto Supplies, INC
330 Ruby Ave
Eugene, OR USA